



State of New Mexico
**WORKERS' COMPENSATION
ADMINISTRATION**

**CALENDAR YEAR 2024
INSURER SCORECARD**

CONTENTS

SCORECARD PROCESS AND NOTES	1
LATE FILING FROI TREND – 12 QTRS: First Report of Injury or Illness	2
LATE FILING FROI ITEMIZED: First Report of Injury or Illness – CY 2024 (CONT.).....	3
LATE FILING FROI ITEMIZED: First Report of Injury or Illness – CY 2024 (CONT.).....	4
LATE FILING FROI ITEMIZED: First Report of Injury or Illness – CY 2024 (CONT.).....	5
LATE FILING FROI ITEMIZED: First Report of Injury or Illness – CY 2024 (CONT.).....	6
LATE PAYMENT OF INITIAL BENEFITS TREND – 12 QTRS	7
LATE PAYMENT OF INITIAL BENEFITS ITEMIZED – CY 2024 (CONT.).....	8
LATE PAYMENT OF INITIAL BENEFITS ITEMIZED – CY 2024 (CONT.).....	9
LATE PAYMENT OF INITIAL BENEFITS ITEMIZED – CY 2024 (CONT.).....	10
LATE PAYMENT OF INITIAL BENEFITS ITEMIZED – CY 2024 (CONT.).....	11
LATE FILING SROI TREND – 12 QTRS: Subsequent Report of Injury.....	12
LATE FILING SROI ITEMIZED – CY 2024: Subsequent Report of Injury (CONT.).....	13
LATE FILING SROI ITEMIZED – CY 2024: Subsequent Report of Injury (CONT.).....	14
LATE FILING SROI ITEMIZED – CY 2024: Subsequent Report of Injury (CONT.).....	15
LATE FILING SROI ITEMIZED – CY 2024: Subsequent Report of Injury (CONT.).....	16
12 QUARTER LEGAL ACTIVITY REPORT (CONT.).....	18
12 QUARTER LEGAL ACTIVITY REPORT (CONT.).....	19
12 QUARTER LEGAL ACTIVITY REPORT (CONT.).....	20

****The New Mexico Workers' Compensation Administration relies on carriers to accurately report their data to the agency. Carrier submissions are subject to computer edits and review by WCA staff. However, the data used in this report remains unaltered by the WCA. As such, data reporting errors can occur and may result in skewed scorecard results.**

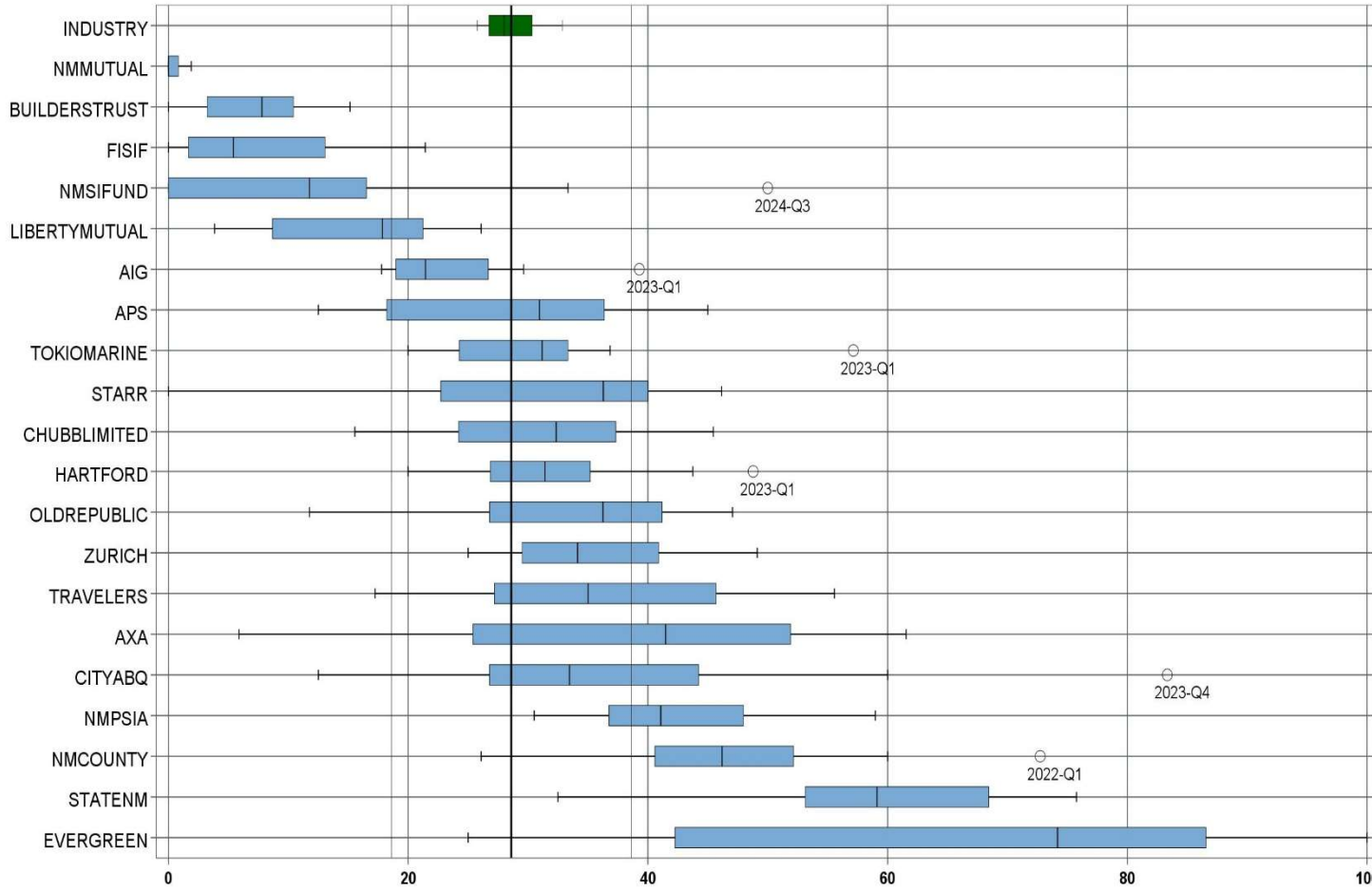
Produced by the Economic Research & Policy Bureau
Richard Adu-Asamoah, Bureau Chief
Ruili Yan, Economist

SCORECARD PROCESS AND NOTES

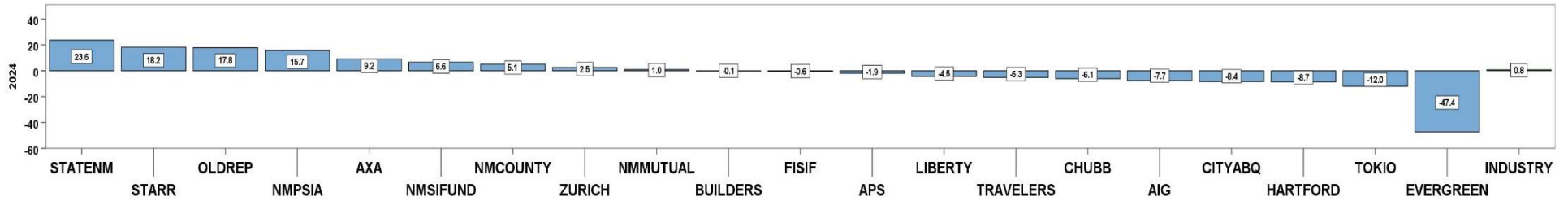
- ❖ Carriers are grouped by the uppermost parent company identified by AM Best Corporation, rather than by the NM WCA-assigned carrier number.
- ❖ The graphical information presented on the first page of each section is based on the 20 carriers and self-insured entities with the highest volume of indemnity SROI reports submitted for the preceding 12 quarters. The selection of carriers by volume of SROIs will automatically “phase-out” carriers that cease to conduct business in New Mexico, and “phase-in” those that increase volume or become active, as needed.
- ❖ Each quarter is presented as a stand-alone quarter that only includes data for that quarter. Additionally, a summary report for the year is prepared alongside Q4 to give carriers an overview of the year.
- ❖ The detailed listing of reporting results is listed alphabetically, rather than by Z-score.

CALENDAR YEAR 2024
New Mexico Workers' Compensation Administration

LATE FILING FROI TREND – 12 QTRS: First Report of Injury or Illness



CY 2024 Claim Summary		
Carrier Name	No.	% Late
AIG	176	19
APS	69	30
AXA	41	39
BUILDERSTRUST	102	7
CHUBBLIMITED	193	24
CITYABQ	40	35
EVERGREEN	89	35
FISIF	75	7
HARTFORD	104	29
LIBERTYMUTUAL	124	13
NMCOUNTY	106	45
NMMUTUAL	423	1
NMPSIA	160	52
NMSIFUND	41	22
OLDREPUBLIC	61	41
STARR	64	38
STATENM	152	70
TOKIOMARINE	60	25
TRAVELERS	152	34
ZURICH	149	34
Industry Average	3,125	28.6%



CALENDAR YEAR 2024
New Mexico Workers' Compensation Administration

LATE FILING FROI ITEMIZED: First Report of Injury or Illness – CY 2024 (CONT.)

Carrier ID	Carrier Name	Number of ttd-ptd claims	Number Late	Late Ratio	Expected	Z-Score	Z > 2
ABF01	ABF FREIGHT SYSTEM INC	7	1	14.3%	2		
H2001	ABQ/BERNCO WATER UTILITY AUTHORITY	1	1	100.0%	0		
468	ACUITY A MUTUAL INS COMPANY	13	4	30.8%	4	0.12	
55353	ALASKA NATIONAL CORPORATION	9	5	55.6%	3		
APS01	ALBUQUERQUE PUBLIC SCHOOLS	69	21	30.4%	20	0.10	
85449	ALLIANZ SE	1	1	100.0%	0		
ALL01	ALLSUP ENTERPRISES INC	1	1	100.0%	0		
58317	AMERICAN FINANCIAL GROUP, INC	7	2	28.6%	2		
58702	AMERICAN INTERNATIONAL GROUP, INC	176	34	19.3%	50	-0.53	
6087	AMERICAN NATIONAL INSURANCE COMPANY	2	0	0.0%	1		
52536	AMERISURE MUTUAL HOLDINGS INC	11	8	72.7%	3	2.53	*****
58459	ARCH CAPITAL GROUP LTD.	33	11	33.3%	9	0.27	
ASF01	ARCHDIOCESE OF SANTA FE	1	0	0.0%	0		
58448	ARGO GROUP INTERNATIONAL HOLDINGS, LTD	24	10	41.7%	7	0.75	
ABC01	ASSOC BUILDERS & CONTRACTORS	5	1	20.0%	1		
85085	AXA S.A.	41	16	39.0%	12	0.60	
BAS01	BASHA'S INC	1	0	0.0%	0		
58334	BERKSHIRE HATHAWAY INC	26	9	34.6%	7	0.34	
46512	BIC HOLDINGS LLC	5	2	40.0%	1		
60081	BLUE CROSS BLUE SHIELD OF MI MUTUAL INS	17	8	47.1%	5	1.06	
BTR01	BUILDERS TRUST	102	7	6.9%	29	-1.25	
85512	CHANDLER INSURANCE COMPANY, LTD.	5	1	20.0%	1		
46331	CHINA MINSHENG INVESTMENT GROUP CORP LTD	5	0	0.0%	1		
CHR01	CHRISTUS ST VINCENT HOSPITAL	30	3	10.0%	9	-1.07	
58303	CHUBB LIMITED	193	47	24.4%	55	-0.24	
259	CHURCH MUTUAL INSURANCE COMPANY	5	3	60.0%	1		
12205	CIMARRON INSURANCE COMPANY	2	0	0.0%	1		
ABQ01	CITY OF ALBUQUERQUE	40	14	35.0%	11	0.37	
CAR01	CITY OF CARLSBAD	4	2	50.0%	1		
FAR01	CITY OF FARMINGTON	9	5	55.6%	3		
CLC01	CITY OF LAS CRUCES	6	2	33.3%	2		
Total		3,125	894	28.6%			

CALENDAR YEAR 2024
New Mexico Workers' Compensation Administration

LATE FILING FROI ITEMIZED: First Report of Injury or Illness – CY 2024 (CONT.)

Carrier ID	Carrier Name	Number of ttd-ptd claims	Number Late	Late Ratio	Expected	Z-Score	Z > 2
CSF01	CITY OF SANTA FE	4	0	0.0%	1		
44179	COPPERPOINT MUTUAL INSURANCE HOLDING CO	17	7	41.2%	5	0.72	
COS01	COSTCO WHOLESALE	9	0	0.0%	3		
11130	DAKOTA TRUCK UNDERWRITERS	2	2	100.0%	1		
DOL01	DOLLAR GENERAL (DOLGEN CORP)	6	2	33.3%	2		
DAC01	DONA ANA COUNTY	3	0	0.0%	1		
318	DONEGAL MUTUAL INSURANCE COMPANY	8	2	25.0%	2		
51243	EMPLOYERS HOLDINGS, INC.	9	6	66.7%	3		
55579	ENSTAR GROUP LIMITED	6	3	50.0%	2		
51656	ERNEST RADY TRUST	4	0	0.0%	1		
58455	EVEREST RE GROUP LTD	25	5	20.0%	7	-0.49	
44385	EVERGREEN PARENT, L.P.	89	31	34.8%	25	0.36	
50710	EXXON MOBIL CORPORATION	1	0	0.0%	0		
58364	FAIRFAX FINANCIAL HOLDINGS LIMITED	27	9	33.3%	8	0.27	
52562	FARM BUREAU MUTUAL HOLDING COMPANY	7	0	0.0%	2		
FEX01	FEDERAL EXPRESS CORP POB 727	14	3	21.4%	4	-0.41	
FED01	FEDERAL EXPRESS GROUND	3	1	33.3%	1		
384	FEDERATED MUTUAL INSURANCE COMPANY	11	5	45.5%	3	0.97	
FIS01	FOOD INDUSTRY SELF INS FUND OF NM	75	5	6.7%	21	-1.26	
FMM01	FREEPORT-MCMORAN CORP	7	2	28.6%	2		
54044	GROUP ONE THOUSAND ONE, LLC	9	5	55.6%	3		
58707	HARTFORD FINANCIAL SERVICES GROUP INC	104	30	28.8%	30	0.01	
51160	INTACT FINANCIAL CORPORATION	3	1	33.3%	1		
ITL01	INTEL CORPORATION	14	1	7.1%	4	-1.23	
51391	JAMESTOWN HOLDINGS CORP.	2	1	50.0%	1		
51114	LIBERTY MUTUAL HOLDING COMPANY INC.	124	16	12.9%	35	-0.90	
50177	LOEWS CORPORATION	39	19	48.7%	11	1.15	
LAN01	LOS ALAMOS LABS	30	5	16.7%	9	-0.68	
46747	MAG MUTUAL HOLDING COMPANY	3	2	66.7%	1		
58405	MARKEL CORPORATION	25	9	36.0%	7	0.42	
MCA01	MECH CONTRACTORS ASSOC OF NM	2	1	50.0%	1		
Total		3,125	894	28.6%			

CALENDAR YEAR 2024
New Mexico Workers' Compensation Administration

LATE FILING FROI ITEMIZED: First Report of Injury or Illness – CY 2024 (CONT.)

Carrier ID	Carrier Name	Number of ttd-ptd claims	Number Late	Late Ratio	Expected	Z-Score	Z > 2
HCW01	N M HEALTHCARE W C GROUP	7	2	28.6%	2		
PSI01	N M PUBLIC SCHOOLS	160	83	51.9%	46	1.33	
RUR01	N M RURAL ELECTRIC COOP ASSOC	8	3	37.5%	2		
SIF01	N M SELF INSURERS FUND	41	9	22.0%	12	-0.38	
2358	NATIONWIDE MUTUAL INSURANCE COMPANY	12	8	66.7%	3	2.18	*****
CIA01	NEW MEXICO ASSN. OF COUNTIES	106	48	45.3%	30	0.96	
HWG01	NEW MEXICO HOSPITAL WORK COMP GROUP	16	4	25.0%	5	-0.21	
11527	NEW MEXICO MUTUAL CASUALTY COMPANY	423	5	1.2%	121	-1.57	
2381	OHIO FARMERS INSURANCE COMPANY	6	4	66.7%	2		
58439	OLD REPUBLIC INTERNATIONAL CORPORATION	61	25	41.0%	17	0.71	
45081	PIE GROUP HOLDINGS, INC	1	0	0.0%	0		
PWC01	PINNACLE WEST CAPITAL CORP	5	1	20.0%	1		
PRE01	PRESBYTERIAN HEALTHCARE SERVICES	14	0	0.0%	4	-1.64	
59716	PROSIGHT GLOBAL HOLDINGS LTD	2	2	100.0%	1		
58332	PROTECTIVE INSURANCE CORPORATION	8	7	87.5%	2		
85434	QBE INSURANCE GROUP LIMITED	21	7	33.3%	6	0.27	
RYD01	RYDER SYSTEMS INC	1	1	100.0%	0		
SJR01	SAN JUAN REGIONAL MEDICAL CENTER	14	4	28.6%	4	0.00	
SAN01	SANDIA CORPORATION	11	3	27.3%	3	-0.08	
58466	SELECTIVE INSURANCE GROUP INC	5	3	60.0%	1		
2466	SENTRY INSURANCE A MUTUAL COMPANY	9	1	11.1%	3		
46834	SERVICE INSURANCE HOLDINGS, INC	15	10	66.7%	4	2.18	*****
52641	SOMPO HOLDINGS INC	6	2	33.3%	2		
55404	STARR INTERNATIONAL COMPANY, INC.	64	24	37.5%	18	0.51	
2479	STATE FARM MUTUAL AUTOMOBILE INS CO	15	4	26.7%	4	-0.11	
SNM01	STATE OF NEW MEXICO RISK MGMT DIVISION	152	107	70.4%	43	2.40	*****
33806	SUNZ HOLDINGS LLC	1	1	100.0%	0		
58505	THE HANOVER INSURANCE GROUP, INC.	2	1	50.0%	1		
KRO01	THE KROGER CO.	12	1	8.3%	3	-1.16	
58633	TOKIO MARINE HOLDINGS, INC.	60	15	25.0%	17	-0.21	
58470	TRAVELERS COMPANIES, INC.	152	52	34.2%	43	0.32	
Total		3,125	894	28.6%			

CALENDAR YEAR 2024
New Mexico Workers' Compensation Administration

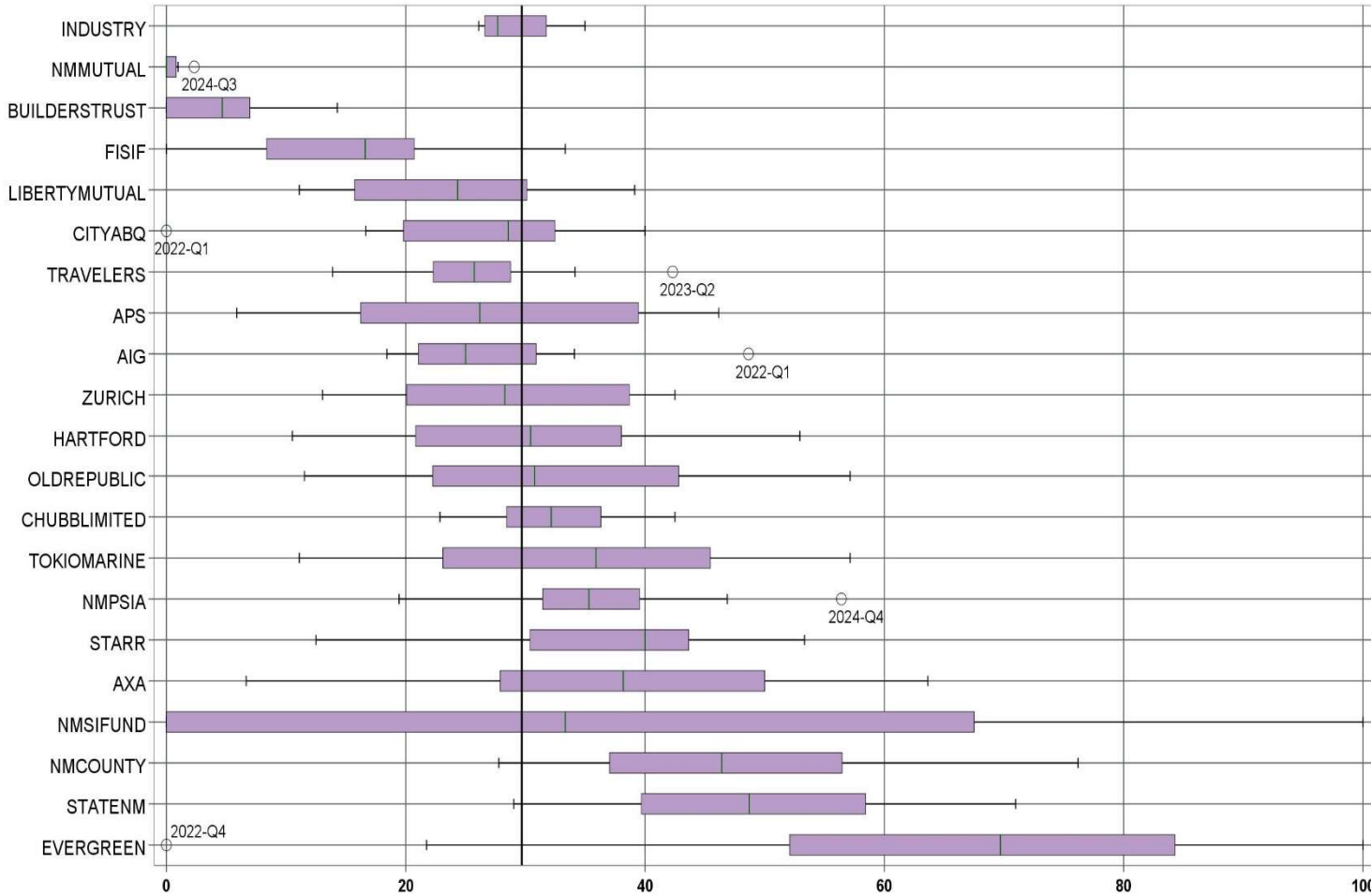
LATE FILING FROI ITEMIZED: First Report of Injury or Illness – CY 2024 (CONT.)

Carrier ID	Carrier Name	Number of ttd-ptd claims	Number Late	Late Ratio	Expected	Z-Score	Z > 2
44768	TREAN INSURANCE GROUP, INC	3	1	33.3%	1		
58496	W. R. BERKLEY CORPORATION	19	9	47.4%	5	1.08	
3482	WCF MUTUAL INSURANCE COMPANY	9	4	44.4%	3		
46966	WESTAIM HIIG LP	2	0	0.0%	1		
50457	ZURICH INSURANCE GROUP LTD	149	51	34.2%	43	0.32	

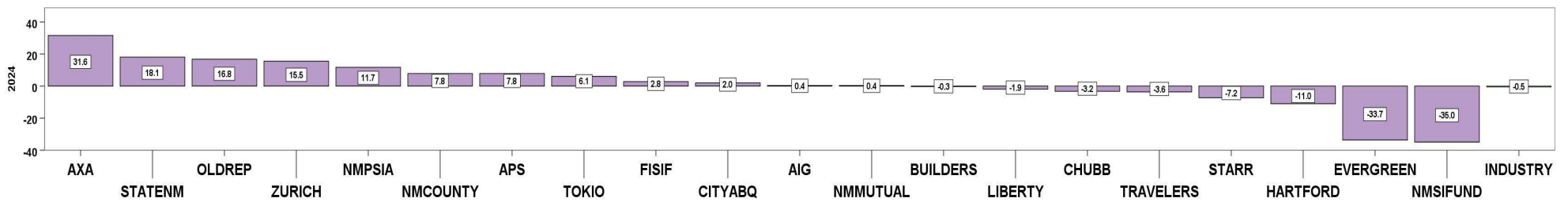
Total		3,125	894	28.6%			
--------------	--	--------------	------------	--------------	--	--	--

CALENDAR YEAR 2024
New Mexico Workers' Compensation Administration

LATE PAYMENT OF INITIAL BENEFITS TREND – 12 QTRS



CY 2024 Claim Summary		
Carrier Name	No.	% Late
AIG	156	24
APS	67	33
AXA	37	54
BUILDERSTRUST	69	3
CHUBBLIMITED	173	31
CITYABQ	36	31
EVERGREEN	82	46
FISIF	74	18
HARTFORD	96	21
LIBERTYMUTUAL	108	20
NMCOUNTY	101	50
NMMUTUAL	389	1
NMPSIA	154	45
NMSIFUND	39	56
OLDREPUBLIC	54	41
STARR	56	34
STATENM	142	56
TOKIOMARINE	54	43
TRAVELERS	138	25
ZURICH	129	35
Industry Average	2,785	29.7%



CALENDAR YEAR 2024
New Mexico Workers' Compensation Administration

LATE PAYMENT OF INITIAL BENEFITS ITEMIZED – CY 2024 (CONT.)

Carrier ID	Carrier Name	Number of ttd-ptd claims	Number Late	Late Ratio	Expected	Z-Score	Z > 2
ABF01	ABF FREIGHT SYSTEM INC	6	3	50.0%	2		
H2001	ABQ/BERNCO WATER UTILITY AUTHORITY	1	1	100.0%	0		
468	ACUITY A MUTUAL INS COMPANY	12	2	16.7%	4	-0.77	
55353	ALASKA NATIONAL CORPORATION	9	2	22.2%	3		
APS01	ALBUQUERQUE PUBLIC SCHOOLS	67	22	32.8%	20	0.19	
85449	ALLIANZ SE	1	1	100.0%	0		
58317	AMERICAN FINANCIAL GROUP, INC	4	2	50.0%	1		
58702	AMERICAN INTERNATIONAL GROUP, INC	156	38	24.4%	46	-0.32	
6087	AMERICAN NATIONAL INSURANCE COMPANY	2	0	0.0%	1		
52536	AMERISURE MUTUAL HOLDINGS INC	11	8	72.7%	3	2.54	*****
58459	ARCH CAPITAL GROUP LTD.	28	11	39.3%	8	0.57	
ASF01	ARCHDIOCESE OF SANTA FE	1	0	0.0%	0		
58448	ARGO GROUP INTERNATIONAL HOLDINGS, LTD	17	4	23.5%	5	-0.36	
ABC01	ASSOC BUILDERS & CONTRACTORS	5	1	20.0%	1		
85085	AXA S.A.	37	20	54.1%	11	1.44	
BAS01	BASHA'S INC	1	1	100.0%	0		
58334	BERKSHIRE HATHAWAY INC	21	8	38.1%	6	0.50	
46512	BIC HOLDINGS LLC	5	2	40.0%	1		
60081	BLUE CROSS BLUE SHIELD OF MI MUTUAL INS	16	9	56.3%	5	1.57	
BTR01	BUILDERS TRUST	69	2	2.9%	20	-1.58	
85512	CHANDLER INSURANCE COMPANY, LTD.	4	2	50.0%	1		
46331	CHINA MINSHENG INVESTMENT GROUP CORP LTD	4	1	25.0%	1		
CHR01	CHRISTUS ST VINCENT HOSPITAL	28	5	17.9%	8	-0.70	
58303	CHUBB LIMITED	173	54	31.2%	51	0.09	
259	CHURCH MUTUAL INSURANCE COMPANY	5	2	40.0%	1		
ABQ01	CITY OF ALBUQUERQUE	36	11	30.6%	11	0.05	
CAR01	CITY OF CARLSBAD	4	1	25.0%	1		
FAR01	CITY OF FARMINGTON	7	2	28.6%	2		
CLC01	CITY OF LAS CRUCES	5	2	40.0%	1		
CSF01	CITY OF SANTA FE	4	0	0.0%	1		
44179	COPPERPOINT MUTUAL INSURANCE HOLDING CO	15	4	26.7%	4	-0.18	
Total		2,785	827	29.7%			

CALENDAR YEAR 2024
New Mexico Workers' Compensation Administration

LATE PAYMENT OF INITIAL BENEFITS ITEMIZED – CY 2024 (CONT.)

Carrier ID	Carrier Name	Number of ttd-ptd claims	Number Late	Late Ratio	Expected	Z-Score	Z > 2
COS01	COSTCO WHOLESALE	8	0	0.0%	2		
11130	DAKOTA TRUCK UNDERWRITERS	2	0	0.0%	1		
DOL01	DOLLAR GENERAL (DOLGEN CORP)	6	1	16.7%	2		
DAC01	DONA ANA COUNTY	3	0	0.0%	1		
318	DONEGAL MUTUAL INSURANCE COMPANY	6	6	100.0%	2		
51243	EMPLOYERS HOLDINGS, INC.	4	2	50.0%	1		
55579	ENSTAR GROUP LIMITED	5	4	80.0%	1		
51656	ERNEST RADY TRUST	4	2	50.0%	1		
58455	EVEREST RE GROUP LTD	21	5	23.8%	6	-0.35	
44385	EVERGREEN PARENT, L.P.	82	38	46.3%	24	0.98	
50710	EXXON MOBIL CORPORATION	1	0	0.0%	0		
58364	FAIRFAX FINANCIAL HOLDINGS LIMITED	20	6	30.0%	6	0.02	
52562	FARM BUREAU MUTUAL HOLDING COMPANY	7	1	14.3%	2		
FEX01	FEDERAL EXPRESS CORP POB 727	11	4	36.4%	3	0.39	
FED01	FEDERAL EXPRESS GROUND	3	1	33.3%	1		
384	FEDERATED MUTUAL INSURANCE COMPANY	11	1	9.1%	3	-1.22	
FIS01	FOOD INDUSTRY SELF INS FUND OF NM	74	13	17.6%	22	-0.72	
FMM01	FREEPORT-MCMORAN CORP	7	2	28.6%	2		
54044	GROUP ONE THOUSAND ONE, LLC	3	2	66.7%	1		
58707	HARTFORD FINANCIAL SERVICES GROUP INC	96	20	20.8%	29	-0.52	
51160	INTACT FINANCIAL CORPORATION	3	2	66.7%	1		
ITL01	INTEL CORPORATION	12	1	8.3%	4	-1.26	
51391	JAMESTOWN HOLDINGS CORP.	2	1	50.0%	1		
51114	LIBERTY MUTUAL HOLDING COMPANY INC.	108	22	20.4%	32	-0.55	
50177	LOEWS CORPORATION	26	18	69.2%	8	2.34	*****
LAN01	LOS ALAMOS LABS	28	2	7.1%	8	-1.33	
46747	MAG MUTUAL HOLDING COMPANY	2	1	50.0%	1		
58405	MARKEL CORPORATION	23	5	21.7%	7	-0.47	
MCA01	MECH CONTRACTORS ASSOC OF NM	2	2	100.0%	1		
HCW01	N M HEALTHCARE W C GROUP	7	2	28.6%	2		
PSI01	N M PUBLIC SCHOOLS	154	70	45.5%	46	0.93	
Total		2,785	827	29.7%			

CALENDAR YEAR 2024
New Mexico Workers' Compensation Administration

LATE PAYMENT OF INITIAL BENEFITS ITEMIZED – CY 2024 (CONT.)

Carrier ID	Carrier Name	Number of ttd-ptd claims	Number Late	Late Ratio	Expected	Z-Score	Z > 2
RUR01	N M RURAL ELECTRIC COOP ASSOC	8	3	37.5%	2		
SIF01	N M SELF INSURERS FUND	39	22	56.4%	12	1.58	
2358	NATIONWIDE MUTUAL INSURANCE COMPANY	11	5	45.5%	3	0.93	
CIA01	NEW MEXICO ASSN. OF COUNTIES	101	50	49.5%	30	1.17	
HWG01	NEW MEXICO HOSPITAL WORK COMP GROUP	16	3	18.8%	5	-0.65	
11527	NEW MEXICO MUTUAL CASUALTY COMPANY	389	3	0.8%	116	-1.71	
2381	OHIO FARMERS INSURANCE COMPANY	4	2	50.0%	1		
58439	OLD REPUBLIC INTERNATIONAL CORPORATION	54	22	40.7%	16	0.65	
45081	PIE GROUP HOLDINGS, INC	1	1	100.0%	0		
PWC01	PINNACLE WEST CAPITAL CORP	3	0	0.0%	1		
PRE01	PRESBYTERIAN HEALTHCARE SERVICES	14	5	35.7%	4	0.36	
59716	PROSIGHT GLOBAL HOLDINGS LTD	2	1	50.0%	1		
58332	PROTECTIVE INSURANCE CORPORATION	2	2	100.0%	1		
85434	QBE INSURANCE GROUP LIMITED	17	5	29.4%	5	-0.02	
SJR01	SAN JUAN REGIONAL MEDICAL CENTER	14	4	28.6%	4	-0.07	
SAN01	SANDIA CORPORATION	11	5	45.5%	3	0.93	
58466	SELECTIVE INSURANCE GROUP INC	4	2	50.0%	1		
2466	SENTRY INSURANCE A MUTUAL COMPANY	8	3	37.5%	2		
46834	SERVICE INSURANCE HOLDINGS, INC	15	9	60.0%	4	1.79	
52641	SOMPO HOLDINGS INC	6	4	66.7%	2		
55404	STARR INTERNATIONAL COMPANY, INC.	56	19	33.9%	17	0.25	
2479	STATE FARM MUTUAL AUTOMOBILE INS CO	12	4	33.3%	4	0.22	
SNM01	STATE OF NEW MEXICO RISK MGMT DIVISION	142	80	56.3%	42	1.58	
33806	SUNZ HOLDINGS LLC	1	1	100.0%	0		
KRO01	THE KROGER CO.	10	2	20.0%	3	-0.57	
58633	TOKIO MARINE HOLDINGS, INC.	54	23	42.6%	16	0.76	
58470	TRAVELERS COMPANIES, INC.	138	35	25.4%	41	-0.26	
44768	TREAN INSURANCE GROUP, INC	3	3	100.0%	1		
58496	W. R. BERKLEY CORPORATION	18	9	50.0%	5	1.20	
3482	WCF MUTUAL INSURANCE COMPANY	7	0	0.0%	2		
46966	WESTAIM HIIG LP	1	0	0.0%	0		
Total		2,785	827	29.7%			

CALENDAR YEAR 2024
 New Mexico Workers' Compensation Administration

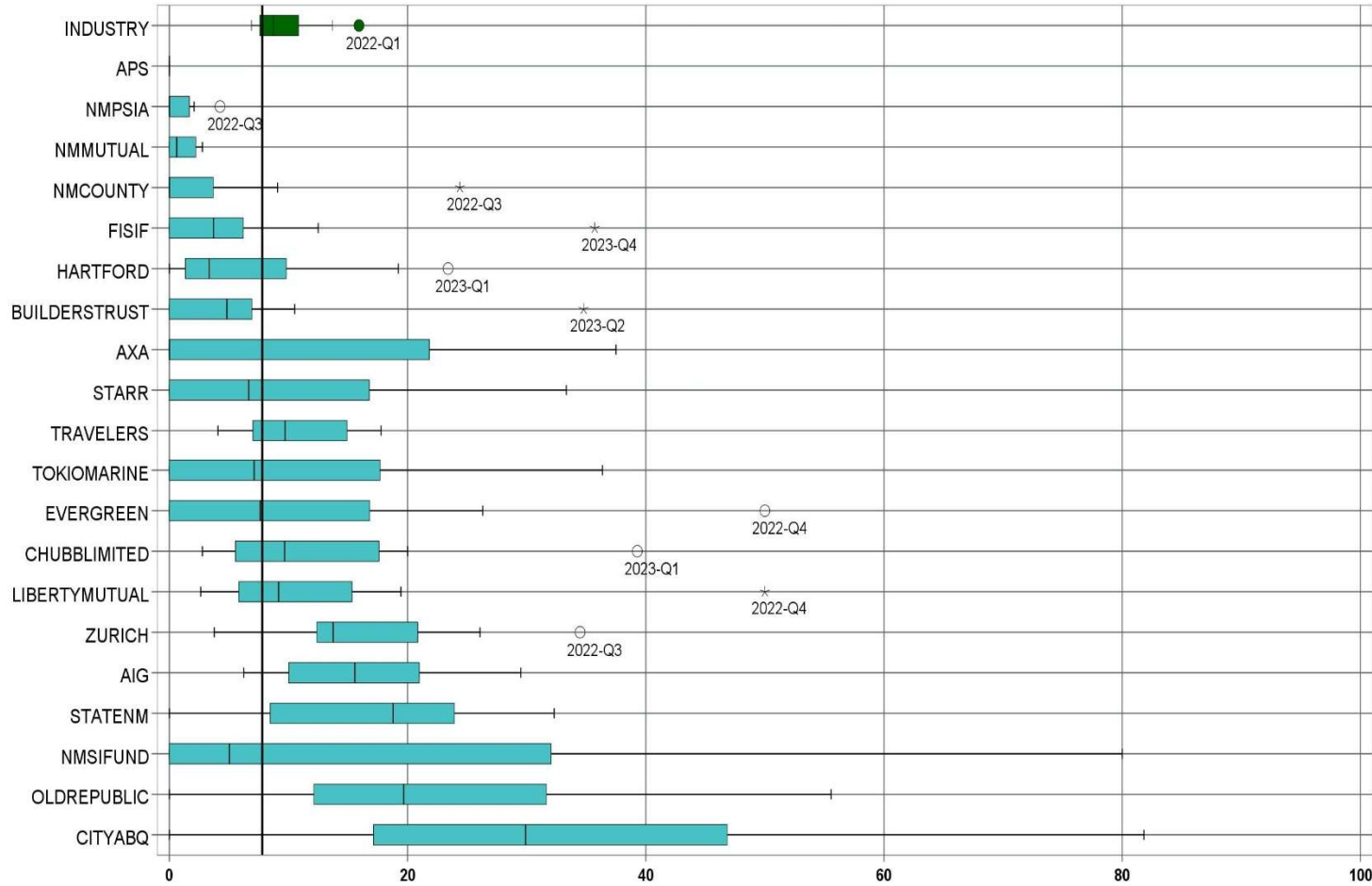
LATE PAYMENT OF INITIAL BENEFITS ITEMIZED – CY 2024 (CONT.)

Carrier ID	Carrier Name	Number of ttd-ptd claims	Number Late	Late Ratio	Expected	Z-Score	Z > 2
50457	ZURICH INSURANCE GROUP LTD	129	45	34.9%	38	0.31	

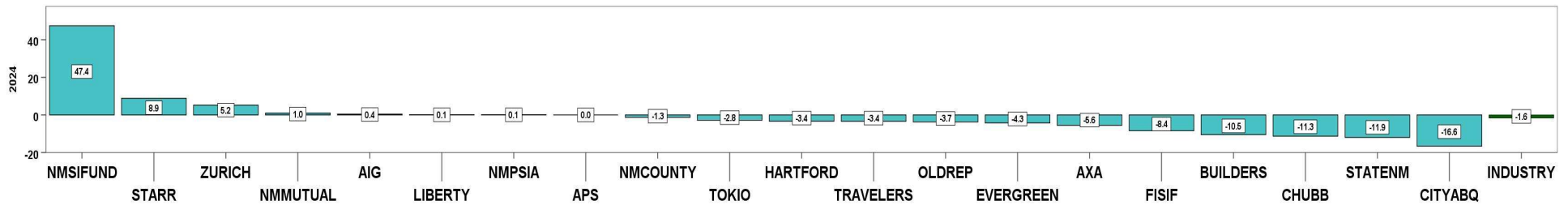
Total		2,785	827	29.7%			
--------------	--	--------------	------------	--------------	--	--	--

CALENDAR YEAR 2024
New Mexico Workers' Compensation Administration

LATE FILING SROI TREND – 12 QTRS: Subsequent Report of Injury



CY 2024 Claim Summary		
Carrier Name	No.	% Late
AIG	200	17
APS	70	0
AXA	42	0
BUILDERSTRUST	112	3
CHUBBLIMITED	219	5
CITYABQ	45	18
EVERGREEN	110	7
FISIF	84	2
HARTFORD	110	6
LIBERTYMUTUAL	184	8
NMCOUNTY	115	2
NMMUTUAL	466	2
NMPSIA	163	1
NMSIFUND	42	52
OLDREPUBLIC	66	15
STARR	66	11
STATENM	162	9
TOKIOMARINE	64	3
TRAVELERS	163	9
ZURICH	178	16
Industry Average	3,513	7.8%



LATE FILING SROI ITEMIZED – CY 2024: Subsequent Report of Injury (CONT.)

Carrier ID	Carrier Name	Number of ttd-ptd claims	Number Late	Late Ratio	Expected	Z-Score	Z > 2
ABF01	ABF FREIGHT SYSTEM INC	8	0	0.0%	1		
H2001	ABQ/BERNCO WATER UTILITY AUTHORITY	1	0	0.0%	0		
468	ACUITY A MUTUAL INS COMPANY	14	3	21.4%	1	0.94	
55353	ALASKA NATIONAL CORPORATION	9	2	22.2%	1		
APS01	ALBUQUERQUE PUBLIC SCHOOLS	70	0	0.0%	5	-0.54	
85449	ALLIANZ SE	1	0	0.0%	0		
ALL01	ALLSUP ENTERPRISES INC	1	1	100.0%	0		
58317	AMERICAN FINANCIAL GROUP, INC	8	0	0.0%	1		
58702	AMERICAN INTERNATIONAL GROUP, INC	200	34	17.0%	16	0.64	
6087	AMERICAN NATIONAL INSURANCE COMPANY	2	0	0.0%	0		
52536	AMERISURE MUTUAL HOLDINGS INC	14	0	0.0%	1	-0.54	
58459	ARCH CAPITAL GROUP LTD.	37	0	0.0%	3	-0.54	
ASF01	ARCHDIOCESE OF SANTA FE	1	0	0.0%	0		
58448	ARGO GROUP INTERNATIONAL HOLDINGS, LTD	25	8	32.0%	2	1.67	
ABC01	ASSOC BUILDERS & CONTRACTORS	5	0	0.0%	0		
85085	AXA S.A.	42	0	0.0%	3	-0.54	
BAS01	BASHA'S INC	1	0	0.0%	0		
58334	BERKSHIRE HATHAWAY INC	28	11	39.3%	2	2.18	*****
46512	BIC HOLDINGS LLC	6	0	0.0%	0		
60081	BLUE CROSS BLUE SHIELD OF MI MUTUAL INS	17	1	5.9%	1	-0.13	
BTR01	BUILDERS TRUST	112	3	2.7%	9	-0.35	
85512	CHANDLER INSURANCE COMPANY, LTD.	5	0	0.0%	0		
46331	CHINA MINSHENG INVESTMENT GROUP CORP LTD	5	0	0.0%	0		
CHR01	CHRISTUS ST VINCENT HOSPITAL	30	1	3.3%	2	-0.31	
58303	CHUBB LIMITED	219	12	5.5%	17	-0.16	
259	CHURCH MUTUAL INSURANCE COMPANY	5	0	0.0%	0		
12205	CIMARRON INSURANCE COMPANY	2	0	0.0%	0		
ABQ01	CITY OF ALBUQUERQUE	45	8	17.8%	4	0.69	
CAR01	CITY OF CARLSBAD	4	0	0.0%	0		
FAR01	CITY OF FARMINGTON	9	0	0.0%	1		
CLC01	CITY OF LAS CRUCES	6	0	0.0%	0		
Total		3,513	274	7.8%			

CALENDAR YEAR 2024
New Mexico Workers' Compensation Administration

LATE FILING SROI ITEMIZED – CY 2024: Subsequent Report of Injury (CONT.)

Carrier ID	Carrier Name	Number of ttd-ptd claims	Number Late	Late Ratio	Expected	Z-Score	Z > 2
CSF01	CITY OF SANTA FE	4	0	0.0%	0		
44179	COPPERPOINT MUTUAL INSURANCE HOLDING CO	19	2	10.5%	1	0.19	
COS01	COSTCO WHOLESALE	10	2	20.0%	1	0.84	
11130	DAKOTA TRUCK UNDERWRITERS	2	2	100.0%	0		
DOL01	DOLLAR GENERAL (DOLGEN CORP)	6	0	0.0%	0		
DAC01	DONA ANA COUNTY	3	0	0.0%	0		
318	DONEGAL MUTUAL INSURANCE COMPANY	13	0	0.0%	1	-0.54	
51243	EMPLOYERS HOLDINGS, INC.	12	2	16.7%	1	0.61	
55579	ENSTAR GROUP LIMITED	13	0	0.0%	1	-0.54	
51656	ERNEST RADY TRUST	6	0	0.0%	0		
58455	EVEREST RE GROUP LTD	26	1	3.8%	2	-0.27	
44385	EVERGREEN PARENT, L.P.	110	8	7.3%	9	-0.04	
50710	EXXON MOBIL CORPORATION	1	0	0.0%	0		
58364	FAIRFAX FINANCIAL HOLDINGS LIMITED	29	3	10.3%	2	0.18	
52562	FARM BUREAU MUTUAL HOLDING COMPANY	7	0	0.0%	1		
FEX01	FEDERAL EXPRESS CORP POB 727	16	0	0.0%	1	-0.54	
FED01	FEDERAL EXPRESS GROUND	4	0	0.0%	0		
384	FEDERATED MUTUAL INSURANCE COMPANY	11	9	81.8%	1	5.12	*****
FIS01	FOOD INDUSTRY SELF INS FUND OF NM	84	2	2.4%	7	-0.37	
FMM01	FREEMPORT-MCMORAN CORP	7	0	0.0%	1		
50408	GENERAL ELECTRIC COMPANY	1	0	0.0%	0		
54044	GROUP ONE THOUSAND ONE, LLC	9	2	22.2%	1		
44975	GUIDEONE MUTUAL HOLDING COMPANY	1	0	0.0%	0		
58707	HARTFORD FINANCIAL SERVICES GROUP INC	110	7	6.4%	9	-0.10	
51160	INTACT FINANCIAL CORPORATION	4	0	0.0%	0		
ITL01	INTEL CORPORATION	14	1	7.1%	1	-0.05	
51391	JAMESTOWN HOLDINGS CORP.	2	0	0.0%	0		
51114	LIBERTY MUTUAL HOLDING COMPANY INC.	184	15	8.2%	14	0.02	
50177	LOEWS CORPORATION	43	4	9.3%	3	0.10	
LAN01	LOS ALAMOS LABS	32	0	0.0%	2	-0.54	
46747	MAG MUTUAL HOLDING COMPANY	3	0	0.0%	0		
Total		3,513	274	7.8%			

CALENDAR YEAR 2024
New Mexico Workers' Compensation Administration

LATE FILING SROI ITEMIZED – CY 2024: Subsequent Report of Injury (CONT.)

Carrier ID	Carrier Name	Number of ttd-ptd claims	Number Late	Late Ratio	Expected	Z-Score	Z > 2
58405	MARKEL CORPORATION	27	0	0.0%	2	-0.54	
MCA01	MECH CONTRACTORS ASSOC OF NM	3	0	0.0%	0		
HCW01	N M HEALTHCARE W C GROUP	8	0	0.0%	1		
PSI01	N M PUBLIC SCHOOLS	163	1	0.6%	13	-0.50	
RUR01	N M RURAL ELECTRIC COOP ASSOC	9	0	0.0%	1		
SIF01	N M SELF INSURERS FUND	42	22	52.4%	3	3.08	*****
2358	NATIONWIDE MUTUAL INSURANCE COMPANY	13	3	23.1%	1	1.06	
CIA01	NEW MEXICO ASSN. OF COUNTIES	115	2	1.7%	9	-0.42	
HWG01	NEW MEXICO HOSPITAL WORK COMP GROUP	17	0	0.0%	1	-0.54	
11527	NEW MEXICO MUTUAL CASUALTY COMPANY	466	9	1.9%	36	-0.41	
2381	OHIO FARMERS INSURANCE COMPANY	7	0	0.0%	1		
58439	OLD REPUBLIC INTERNATIONAL CORPORATION	66	10	15.2%	5	0.51	
45081	PIE GROUP HOLDINGS, INC	1	1	100.0%	0		
PWC01	PINNACLE WEST CAPITAL CORP	5	0	0.0%	0		
PRE01	PRESBYTERIAN HEALTHCARE SERVICES	30	2	6.7%	2	-0.08	
59716	PROSIGHT GLOBAL HOLDINGS LTD	2	0	0.0%	0		
58332	PROTECTIVE INSURANCE CORPORATION	12	1	8.3%	1	0.04	
85434	QBE INSURANCE GROUP LIMITED	22	2	9.1%	2	0.09	
RYD01	RYDER SYSTEMS INC	1	1	100.0%	0		
SJR01	SAN JUAN REGIONAL MEDICAL CENTER	14	0	0.0%	1	-0.54	
SAN01	SANDIA CORPORATION	12	0	0.0%	1	-0.54	
58466	SELECTIVE INSURANCE GROUP INC	5	0	0.0%	0		
2466	SENTRY INSURANCE A MUTUAL COMPANY	18	2	11.1%	1	0.23	
46834	SERVICE INSURANCE HOLDINGS, INC	15	0	0.0%	1	-0.54	
52641	SOMPO HOLDINGS INC	6	0	0.0%	0		
55404	STARR INTERNATIONAL COMPANY, INC.	66	7	10.6%	5	0.19	
2479	STATE FARM MUTUAL AUTOMOBILE INS CO	18	2	11.1%	1	0.23	
SNM01	STATE OF NEW MEXICO RISK MGMT DIVISION	162	14	8.6%	13	0.06	
33806	SUNZ HOLDINGS LLC	3	0	0.0%	0		
TAR01	TARGET STORES/DAYTON HUDSON	3	0	0.0%	0		
58505	THE HANOVER INSURANCE GROUP, INC.	4	1	25.0%	0		
Total		3,513	274	7.8%			

CALENDAR YEAR 2024
New Mexico Workers' Compensation Administration

LATE FILING SROI ITEMIZED – CY 2024: Subsequent Report of Injury (CONT.)

Carrier ID	Carrier Name	Number of ttd-ptd claims	Number Late	Late Ratio	Expected	Z-Score	Z > 2
KRO01	THE KROGER CO.	13	1	7.7%	1	-0.01	
58633	TOKIO MARINE HOLDINGS, INC.	64	2	3.1%	5	-0.32	
58470	TRAVELERS COMPANIES, INC.	163	14	8.6%	13	0.05	
44768	TREAN INSURANCE GROUP, INC	3	0	0.0%	0		
58496	W. R. BERKLEY CORPORATION	26	2	7.7%	2	-0.01	
3482	WCF MUTUAL INSURANCE COMPANY	10	2	20.0%	1	0.84	
46966	WESTAIM HIIG LP	2	0	0.0%	0		
WES01	WESTERN REFINING	1	0	0.0%	0		
50457	ZURICH INSURANCE GROUP LTD	178	29	16.3%	14	0.59	

Total		3,513	274	7.8%			
--------------	--	--------------	------------	-------------	--	--	--

CALENDAR YEAR 2024
New Mexico Workers' Compensation Administration

12 QUARTER LEGAL ACTIVITY REPORT

Carrier ID	Carrier Name	Total	No Legal Activity	Legal Activity	% Legal Activity
ABF01	ABF FREIGHT SYSTEM INC	20	16	4	20.0%
H2001	ABQ/BERNCO WATER UTILITY AUTHORITY	9	6	3	33.3%
468	ACUITY A MUTUAL INS COMPANY	31	26	5	16.1%
55353	ALASKA NATIONAL CORPORATION	11	11	0	0.0%
APS01	ALBUQUERQUE PUBLIC SCHOOLS	217	198	19	8.8%
85449	ALLIANZ SE	2	2	0	0.0%
ALL01	ALLSUP ENTERPRISES INC	1	0	1	100.0%
58317	AMERICAN FINANCIAL GROUP, INC	15	9	6	40.0%
58702	AMERICAN INTERNATIONAL GROUP, INC	658	500	158	24.0%
6087	AMERICAN NATIONAL INSURANCE COMPANY	5	3	2	40.0%
52536	AMERISURE MUTUAL HOLDINGS INC	34	30	4	11.8%
58459	ARCH CAPITAL GROUP LTD.	141	113	28	19.9%
ASF01	ARCHDIOCESE OF SANTA FE	6	4	2	33.3%
58448	ARGO GROUP INTERNATIONAL HOLDINGS, LTD	71	54	17	23.9%
ABC01	ASSOC BUILDERS & CONTRACTORS	18	16	2	11.1%
51156	ASSURANT INC	1	1	0	0.0%
85085	AXA S.A.	147	123	24	16.3%
BAS01	BASHA'S INC	3	3	0	0.0%
58334	BERKSHIRE HATHAWAY INC	129	97	32	24.8%
46512	BIC HOLDINGS LLC	18	16	2	11.1%
60081	BLUE CROSS BLUE SHIELD OF MI MUTUAL INS	67	53	14	20.9%
BTR01	BUILDERS TRUST	377	314	63	16.7%
2081	CENTRAL MUTUAL INSURANCE COMPANY	2	2	0	0.0%
85512	CHANDLER INSURANCE COMPANY, LTD.	32	22	10	31.3%
CHE01	CHEVRON USA	2	2	0	0.0%
46331	CHINA MINSHENG INVESTMENT GROUP CORP LTD	9	7	2	22.2%
CHR01	CHRISTUS ST VINCENT HOSPITAL	62	58	4	6.5%
58303	CHUBB LIMITED	738	577	161	21.8%
259	CHURCH MUTUAL INSURANCE COMPANY	20	16	4	20.0%
12205	CIMARRON INSURANCE COMPANY	14	7	7	50.0%
58704	CINCINNATI FINANCIAL CORPORATION	14	10	4	28.6%
12 Quarter Total		11,529	9,485	2,044	17.7%

CALENDAR YEAR 2024
New Mexico Workers' Compensation Administration

12 QUARTER LEGAL ACTIVITY REPORT (CONT.)

Carrier ID	Carrier Name	Total	No Legal Activity	Legal Activity	% Legal Activity
ABQ01	CITY OF ALBUQUERQUE	179	145	34	19.0%
CAR01	CITY OF CARLSBAD	24	21	3	12.5%
FAR01	CITY OF FARMINGTON	41	32	9	22.0%
CLC01	CITY OF LAS CRUCES	35	27	8	22.9%
CSF01	CITY OF SANTA FE	25	21	4	16.0%
3633	COLUMBIA MUTUAL INSURANCE COMPANY	2	2	0	0.0%
44179	COPPERPOINT MUTUAL INSURANCE HOLDING CO	54	40	14	25.9%
COS01	COSTCO WHOLESALE	29	23	6	20.7%
11130	DAKOTA TRUCK UNDERWRITERS	4	4	0	0.0%
DOL01	DOLLAR GENERAL (DOLGEN CORP)	14	11	3	21.4%
DAC01	DONA ANA COUNTY	3	3	0	0.0%
318	DONEGAL MUTUAL INSURANCE COMPANY	32	19	13	40.6%
51243	EMPLOYERS HOLDINGS, INC.	51	43	8	15.7%
55579	ENSTAR GROUP LIMITED	60	46	14	23.3%
51656	ERNEST RADY TRUST	9	7	2	22.2%
58455	EVEREST RE GROUP LTD	67	53	14	20.9%
44385	EVERGREEN PARENT, L.P.	203	177	26	12.8%
50710	EXXON MOBIL CORPORATION	4	4	0	0.0%
58364	FAIRFAX FINANCIAL HOLDINGS LIMITED	80	61	19	23.8%
52562	FARM BUREAU MUTUAL HOLDING COMPANY	9	9	0	0.0%
FEX01	FEDERAL EXPRESS CORP POB 727	49	44	5	10.2%
FED01	FEDERAL EXPRESS GROUND	19	16	3	15.8%
384	FEDERATED MUTUAL INSURANCE COMPANY	43	37	6	14.0%
FIS01	FOOD INDUSTRY SELF INS FUND OF NM	258	229	29	11.2%
FMM01	FREEPORT-MCMORAN CORP	27	25	2	7.4%
50408	GENERAL ELECTRIC COMPANY	2	2	0	0.0%
46846	GOOSE CREEK CAPITAL INC	1	1	0	0.0%
51888	GRAY & COMPANY, INC.	1	1	0	0.0%
GRO01	GROENDYKE TRANSPORT	1	1	0	0.0%
54044	GROUP ONE THOUSAND ONE, LLC	17	15	2	11.8%
44975	GUIDEONE MUTUAL HOLDING COMPANY	2	1	1	50.0%
12 Quarter Total		11,529	9,485	2,044	17.7%

CALENDAR YEAR 2024
New Mexico Workers' Compensation Administration

12 QUARTER LEGAL ACTIVITY REPORT (CONT.)

Carrier ID	Carrier Name	Total	No Legal Activity	Legal Activity	% Legal Activity
58707	HARTFORD FINANCIAL SERVICES GROUP INC	393	315	78	19.8%
85259	HDI V.A.G.	1	0	1	100.0%
HEA01	HEALTHSOUTH REHAB CORP	1	1	0	0.0%
51160	INTACT FINANCIAL CORPORATION	4	4	0	0.0%
ITL01	INTEL CORPORATION	28	26	2	7.1%
51391	JAMESTOWN HOLDINGS CORP.	4	3	1	25.0%
KIE01	KIEWIT CONSTRUCTION GROUP INC	1	1	0	0.0%
51114	LIBERTY MUTUAL HOLDING COMPANY INC.	501	426	75	15.0%
50177	LOEWS CORPORATION	132	103	29	22.0%
LAN01	LOS ALAMOS LABS	77	63	14	18.2%
MAC01	MACYS INC	2	2	0	0.0%
46747	MAG MUTUAL HOLDING COMPANY	3	2	1	33.3%
11387	MAINE EMPLOYERS MUTUAL INSURANCE COMPANY	4	4	0	0.0%
58405	MARKEL CORPORATION	71	62	9	12.7%
MCA01	MECH CONTRACTORS ASSOC OF NM	12	11	1	8.3%
02327	MIDWEST FAMILY MUTUAL INSURANCE CO	1	1	0	0.0%
HCW01	N M HEALTHCARE W C GROUP	20	20	0	0.0%
PSI01	N M PUBLIC SCHOOLS	562	509	53	9.4%
RUR01	N M RURAL ELECTRIC COOP ASSOC	26	24	2	7.7%
SIF01	N M SELF INSURERS FUND	196	174	22	11.2%
2358	NATIONWIDE MUTUAL INSURANCE COMPANY	30	23	7	23.3%
CIA01	NEW MEXICO ASSN. OF COUNTIES	322	287	35	10.9%
HWG01	NEW MEXICO HOSPITAL WORK COMP GROUP	53	49	4	7.5%
11527	NEW MEXICO MUTUAL CASUALTY COMPANY	1,782	1,406	376	21.1%
AGC01	NM BUILDING BRANCH AGC	7	6	1	14.3%
2381	OHIO FARMERS INSURANCE COMPANY	22	20	2	9.1%
58439	OLD REPUBLIC INTERNATIONAL CORPORATION	241	198	43	17.8%
320	PHARMACISTS MUTUAL INSURANCE COMPANY	1	1	0	0.0%
45081	PIE GROUP HOLDINGS, INC	1	1	0	0.0%
PWC01	PINNACLE WEST CAPITAL CORP	11	11	0	0.0%
PRE01	PRESBYTERIAN HEALTHCARE SERVICES	109	106	3	2.8%
12 Quarter Total		11,529	9,485	2,044	17.7%

CALENDAR YEAR 2024
New Mexico Workers' Compensation Administration

12 QUARTER LEGAL ACTIVITY REPORT (CONT.)

Carrier ID	Carrier Name	Total	No Legal Activity	Legal Activity	% Legal Activity
59716	PROSIGHT GLOBAL HOLDINGS LTD	2	2	0	0.0%
58332	PROTECTIVE INSURANCE CORPORATION	37	24	13	35.1%
85434	QBE INSURANCE GROUP LIMITED	51	39	12	23.5%
RYD01	RYDER SYSTEMS INC	3	2	1	33.3%
SJR01	SAN JUAN REGIONAL MEDICAL CENTER	45	43	2	4.4%
SAN01	SANDIA CORPORATION	35	34	1	2.9%
58466	SELECTIVE INSURANCE GROUP INC	17	15	2	11.8%
2466	SENTRY INSURANCE A MUTUAL COMPANY	72	64	8	11.1%
46834	SERVICE INSURANCE HOLDINGS, INC	34	31	3	8.8%
01929	SFM MUTUAL INSURANCE COMPANY	1	1	0	0.0%
52641	SOMPO HOLDINGS INC	14	14	0	0.0%
55404	STARR INTERNATIONAL COMPANY, INC.	183	156	27	14.8%
2479	STATE FARM MUTUAL AUTOMOBILE INS CO	36	26	10	27.8%
SNM01	STATE OF NEW MEXICO RISK MGMT DIVISION	547	453	94	17.2%
33806	SUNZ HOLDINGS LLC	5	5	0	0.0%
TAR01	TARGET STORES/DAYTON HUDSON	15	12	3	20.0%
58505	THE HANOVER INSURANCE GROUP, INC.	20	12	8	40.0%
KRO01	THE KROGER CO.	45	41	4	8.9%
58633	TOKIO MARINE HOLDINGS, INC.	219	190	29	13.2%
58470	TRAVELERS COMPANIES, INC.	548	462	86	15.7%
44768	TREAN INSURANCE GROUP, INC	3	3	0	0.0%
58496	W. R. BERKLEY CORPORATION	142	97	45	31.7%
3482	WCF MUTUAL INSURANCE COMPANY	19	14	5	26.3%
46966	WESTAIM HIIG LP	12	8	4	33.3%
WES01	WESTERN REFINING	1	0	1	100.0%
50457	ZURICH INSURANCE GROUP LTD	586	462	124	21.2%
12 Quarter Total		11,529	9,485	2,044	17.7%